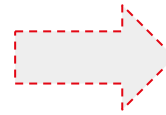


# Step 1 - Download the Google Authenticator App and go to the portal

- Download the Google Authenticator App from your App Store



- Then click on this link: <https://portal.sussexpathology.com/>

## Step 2 - Enter your Username & Password

- Enter your **Username & Password**

A screenshot of the Bloodlink login page. At the top is the Bloodlink logo, which consists of a blue speech bubble with a red drop and the text 'BLOODLINK POWERED BY SUSSEX PATHOLOGY'. Below the logo are three input fields: 'Username:' with the text 'shaz\_k', 'Password:' with a masked password '\*\*\*\*\*', and 'OTP Token:'. At the bottom right is a blue 'Log in' button. A red dashed arrow points from the second bullet point to the 'Log in' button.


- Click **Login**

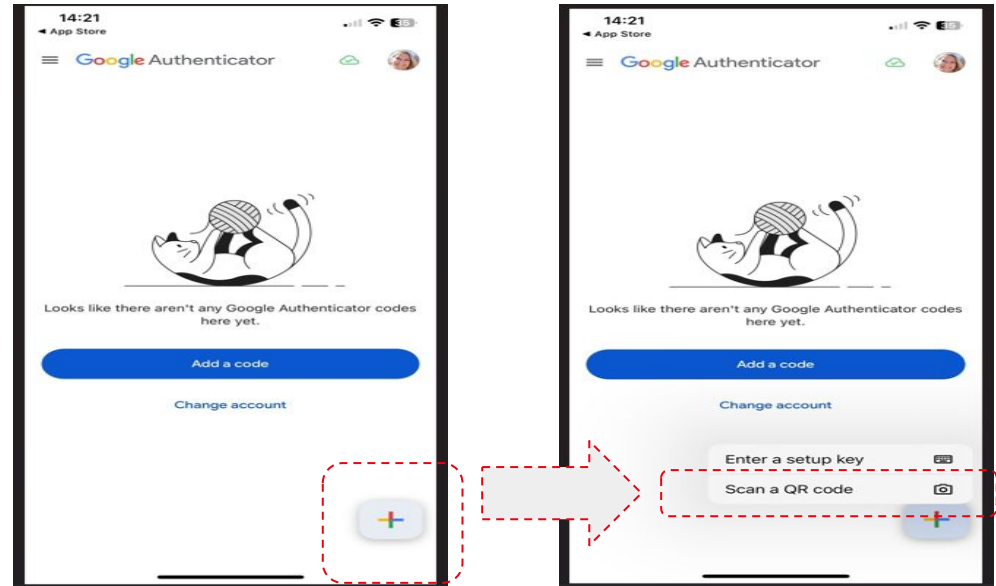


*Once to click Login, you'll be directed to a page with a QR code to set up your Two-Factor Authentication (2FA) for enhanced security*

# Step 3 - Set up your Two-Factor Authentication (2FA)

NOTE: You will need your mobile phone for this next steps

- Open the **Google Authenticator App** on your phone and select the  icon
- Then select **Scan a QR code**
- Then select **Scan a QR code**



- Use your mobile to scan the **QR code** displayed on your computer screen.
- Enter the **6-digit OTP code** underneath the QR Code on your computer screen and press **Submit**

Once you have completed steps 1-10 your 2FA will be set up and your account will be secured and linked to your mobile phone.

# Step 4 - Log into the portal using your Authenticator App

Once you have completed **Step 3** you will be automatically **redirected back to the main login page**. You now need to complete the steps below to login

- Enter your **Username & Password**
- Open your **Google Authenticator app** on your mobile phone and enter the **6 digit OTP code**
- Click **Login**



The screenshot shows the Bloodlink login portal. At the top, there is a logo consisting of two overlapping blue circles with red dots inside, and a red blood drop below it. To the right of the logo, the text "BLOODLINK" is displayed in blue, with "POWERED BY SUSSEX PATHOLOGY" in smaller blue text underneath. Below the logo, there are three input fields, each enclosed in a red dashed border. The first field is labeled "Username:" and contains the text "shaz\_k". The second field is labeled "Password:" and contains a series of dots. The third field is labeled "OTP Token:" and is currently empty. Below these fields is a blue "Log in" button, also enclosed in a red dashed border. Three red dashed arrows point from the list of steps on the left to the corresponding input fields and the "Log in" button.

Note: You will need to complete the **same steps above each time** you log into the portal